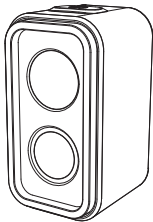


EN

MAGICSHINE®



SEEMEE 300
USER MANUAL

WARNING



WHAT'S IN



SEEMEE 300



Saddle mount



Type-C
charging cable



Seat post mount

OPERATION INSTRUCTIONS



When the brake sensor is on, the taillight will enter to the sleep mode after 5 minutes of inaction and auto activated on any vibrations.



When the brake sensor detects braking, the taillight will light up with maximum output.

Turn the brake function on:

When the light is off, press and hold the switch for 3s until the light lights up constantly at highest output.

Turn the brake function off:

When the light is off, press and hold the switch for 3s until the light keeps flashing quickly at highest output.

ON/OFF:

Press and hold the switch to turn the light on/off, the default output is the last mode when turned off.

CHANGE MODE:

When the light is on, single click the switch to cycle through Low-High-Flash-Group Ride-Smart-Low...

MEMORY FUCTION:

Mode memory features will save the last selected brightness level automatically.

LOW POWER MODE:

When the remaining battery power is low, the switch starts flashing and the lighting mode changes to ECO mode. The brake function is disabled during this period.

OPTITRACING LIGHT:

The OptiTracing light is controlled by the light sensor. It will be off during the daytime. At nighttime, it flashes when the main light is in constant mode, and lights up constantly when the main light is flashing.

OUTPUT/RUNTIME

	MAIN LIGHT	OPTITRACING LIGHT	RUNTIME (DAY)	RUNTIME (NIGHT)
LOW	20LM	20-0LM	60h	40h
HIGH	100M	100-0LM	8h	6h
FLASH	100-0LM	60LM	45h	7h
GROUP RIDE	20-0LM	20LM	200h	50h
SMART (DAY)	300-0LM	0LM	35h	/
SMART (NIGHT)	100-20LM	60LM	/	6h

*All performance measurements in accordance with ANSI/NEMA FL1-2009 Standard. The tests are performed indoors under a room temperature of 25 degrees Celsius with 25KM/H wind conditions. The runtime may vary depending on the external temperature and ventilation conditions, and these biases may affect the results of testing.

*The stated runtime of each mode excludes the brake function. When the brake function is on, the runtime will vary depending on the frequency of braking.

CHARGING/POWER INDICATOR

When the light is off,click the switch to activate battery indicator for 3 seconds.

Charging: Flash red

Fully charge: Constant green for 3 minutes

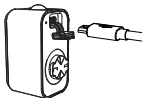
Standard charging time approx 2hrs(5V 1A)

POWER INDICATOR

21%-100%: Constant green

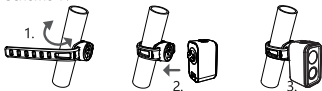
11%-20%: Constant red

0%-10%: Flash red



HOW TO INSTALL

Scheme 1:



Scheme 2:

